

# REACH 5 MINI

DATASHEET

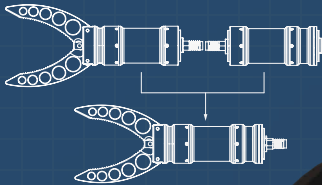
## 5 Function Manipulator

The Reach 5 Mini is a leap in miniature subsea manipulation technology. It builds on the modularity of the RS1 series to create a highly durable and light weight manipulator, capable of performing dexterous subsea tasks. It is avail-

able in a 3, 4 or 5 function configuration and is easily tailored to meet application specific requirements. Independent axis allow for quick replacement, minimizing downtime. Feedback of position and force provide active self-protection.

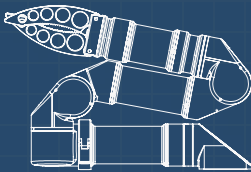
### MODULAR BY DESIGN

Five Independent Axis



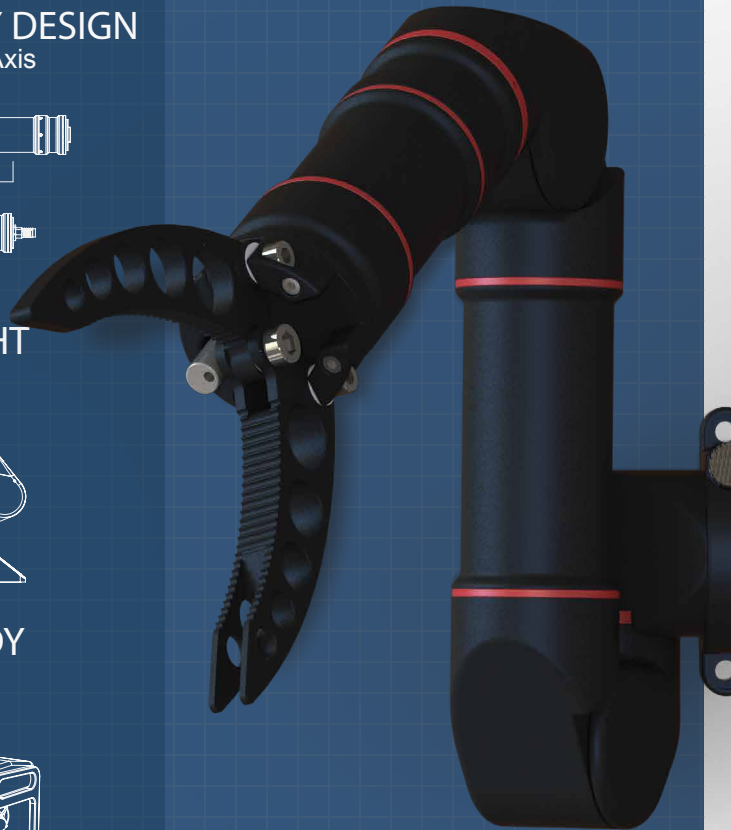
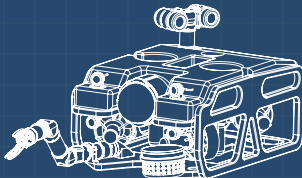
### SMALL & LIGHT

900g In Water



### SUBSEA READY

300m Depth Rating



Tel: +61 (0) 416 657 647  
Email: [info@theblueprintlabs.com](mailto:info@theblueprintlabs.com)  
Web: [www.theblueprintlabs.com](http://www.theblueprintlabs.com)

← THE  
BLUEPRINT LAB →

# SPECIFICATIONS



## Mechanical

Lift Capacity	2Kg
Weight (air)	1360g
Weight (water)	900g



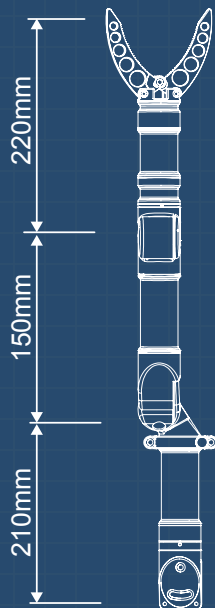
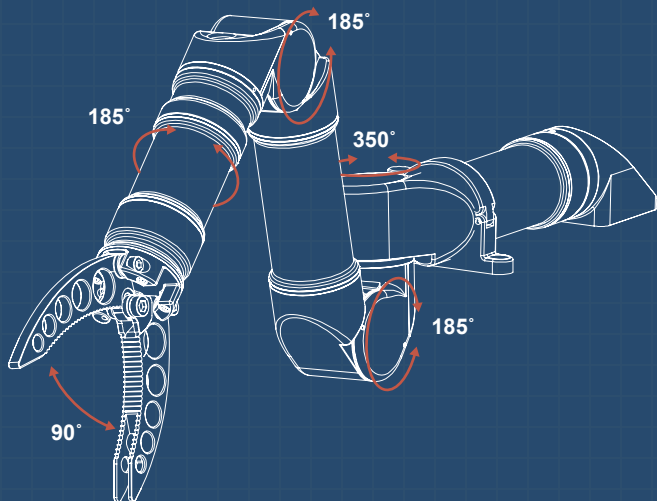
## Electrical

Voltage	18-30V
Wattage	35W Max
COMS	RS232/485



## Environmental

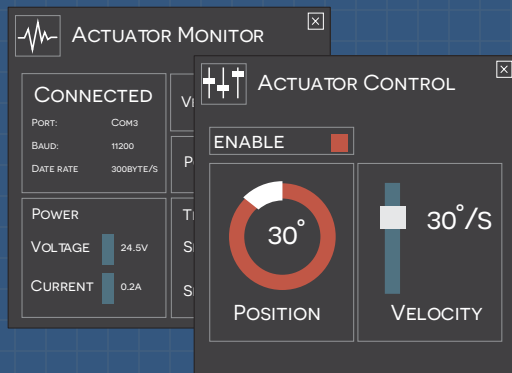
Depth	300 MSW
Temp	-35 to 35° C
Material	AL 6061



## REACH CONTROL LITE

A plug and play graphic interface for controlling, monitoring and configuring all available RS1 modules

- Communicates over serial or UDP.
- Provides intuitive control of position, velocity and current.
- Monitoring of force, voltage and temperatures.
- Customisable limits of position, velocity and force.



Tel: +61 (0) 416 657 647  
Email: [info@theblueprintlabs.com](mailto:info@theblueprintlabs.com)  
Web: [www.theblueprintlabs.com](http://www.theblueprintlabs.com)

← THE BLUEPRINT LAB →