

RS1-1300

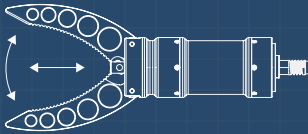
DATASHEET

GRABBER

RS1-1300 is a high strength linear actuator. Attached to jaws this device turns into a highly capable grabber, cutter or sampler. Accurate position and force control allows for the manipulation of delicate objects. With the addition of the

RS1 mounting kit the jaws can be quickly orientated to the required position. When compared to the dual function grabber this option is slightly smaller, lighter and available at a lower price point.

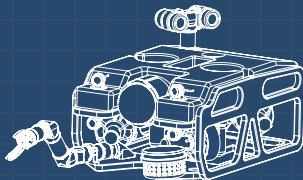
Accurate
Force & Position Control



SMALL & LIGHT
40mm Standard OD



SUBSEA READY
300m Depth Rating



Tel: +61 (0) 416 657 647
Email: info@theblueprintlabs.com
Web: www.theblueprintlabs.com

← THE
BLUEPRINT LAB →

SPECIFICATIONS



Mechanical

Max Lift Weight 20Kg
Weight (air) 360g
Weight (water) 240g



Electrical

Voltage 18-30V
Power 6W Max
COMS RS232

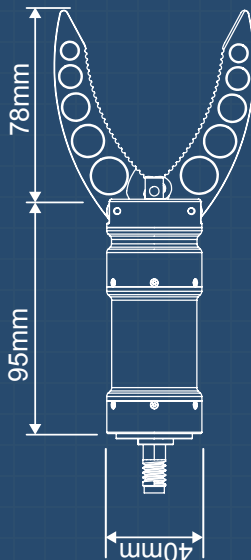
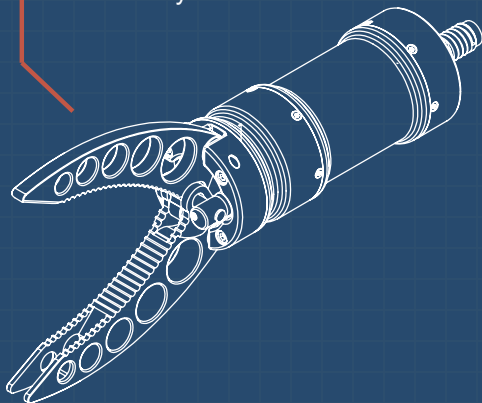


Environmental

Depth 300 MSW
Temp -35 to 35° C
Material AL 6061

Linear

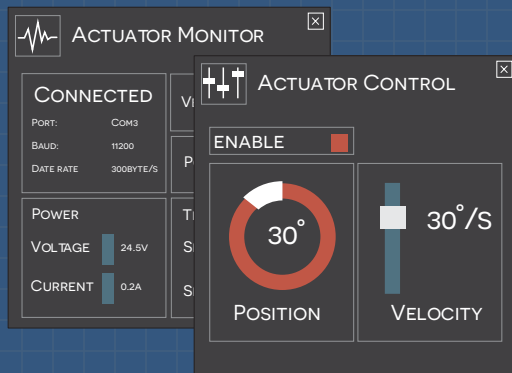
Force 600N
Rate 2.5mm/s
Travel 24mm
Accuracy ± 0.1 mm Abs



REACH CONTROL LITE

A plug and play graphic interface for controlling, monitoring and configuring all available RS1 modules.

- Communicates over serial or UDP.
- Provides intuitive control of position, velocity and current.
- Monitoring of force, voltage and temperatures.
- Customisable limits of position, velocity and force.



Tel: +61 (0) 416 657 647
Email: info@theblueprintlabs.com
Web: www.theblueprintlabs.com

← THE BLUEPRINT LAB →