

REACH SYSTEM ONE

RS1-2130 Dual Function Grabber

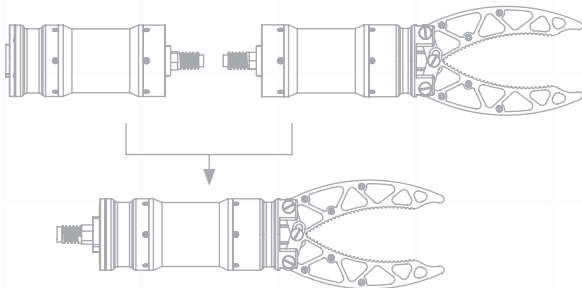


Key Features

The **Reach System One 2130**, Dual Function Grabber combines a high strength linear stage with a rotatory actuator to create a two jaw grabber with the ability of accurately orientate the end effector. Lighter, smaller and more capable than anything else in its class the RS1-2130 extends the capability of small unmanned vehicles to manipulate and recover objects in remote and hostile environments.

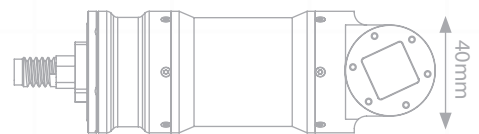
Modular By Design

Dual Functionality



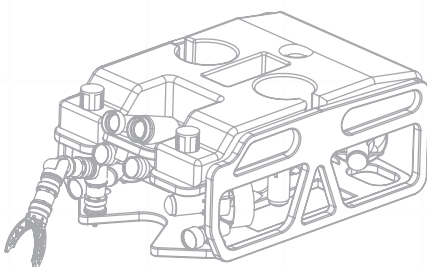
Small Size

40mm Standard OD



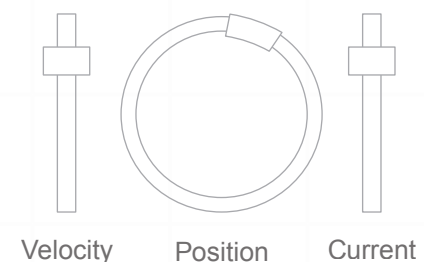
Underwater Ready

Depth rated to 300m



Full Control

Controllable Gripping Force



SPECIFICATIONS

Mechanical

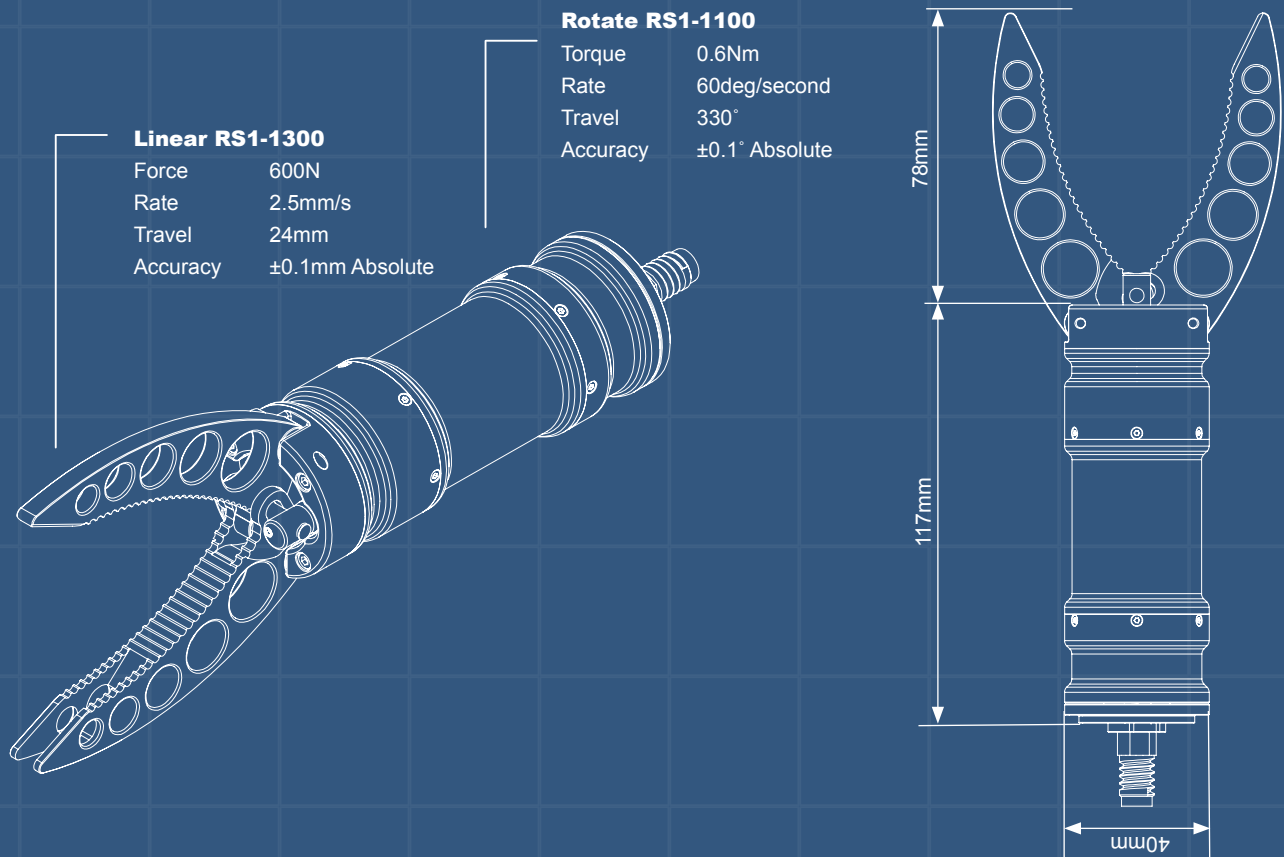
Max Lift Weight	20Kg
Weight (air)	360g
Weight (water)	240g
Dimensions	40x118mm

Environmental

Depth	300 MSW
Temperature	-35°C + 35°C
Shock	200Gs
Material	6061

Electrical

Voltage	18-30V
Wattage	11W Max
Communication	RS232 Full Duplex

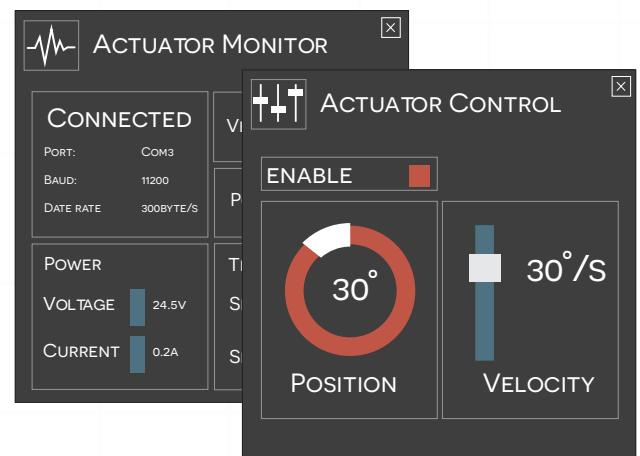


* Various torques and rates are available upon request. Customisation of connectors, grippers and attachments is possible
 ** Specifications subject to change without prior notice.

Includes Reach Control Lite

A plug and play graphic interface for control-long, monitoring and configuring all available RS1 Models.

- Communicates over any available serial port.
- Provides intuitive control over position, velocity and current.
- Monitoring of force, voltage and temperatures.
- Customisable limits of force, position and velocity.



Tel: +61 (0) 416 657 647
 Email: info@theblueprintlabs.com
 Web: www.theblueprintlabs.com

THE
BLUEPRINTLAB